

Plate 10 Horizon slice showing a stream channel. The superimposed contours illustrate the structure and the brightness in the high portion of the channel indicates hydrocarbons in a channel sand reservoir. (From Brown, 1985: 123.)

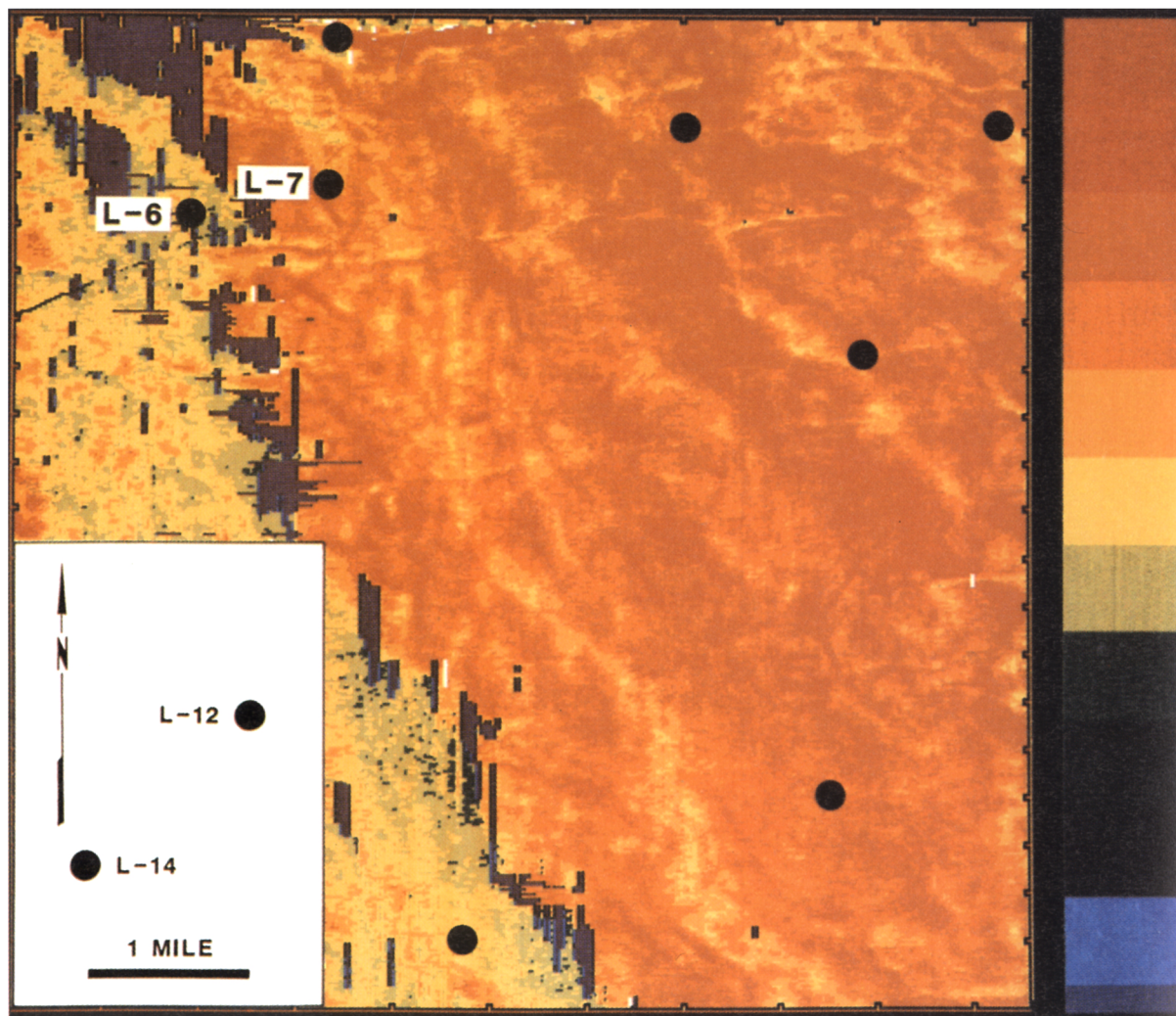


Plate 11 Horizon slice along an angular unconformity reflection. The NW-SE lineations indicate the subcrop of different members dipping to the SW, and the W-E lineations indicate faults. (From Brown, 1991: 135.)



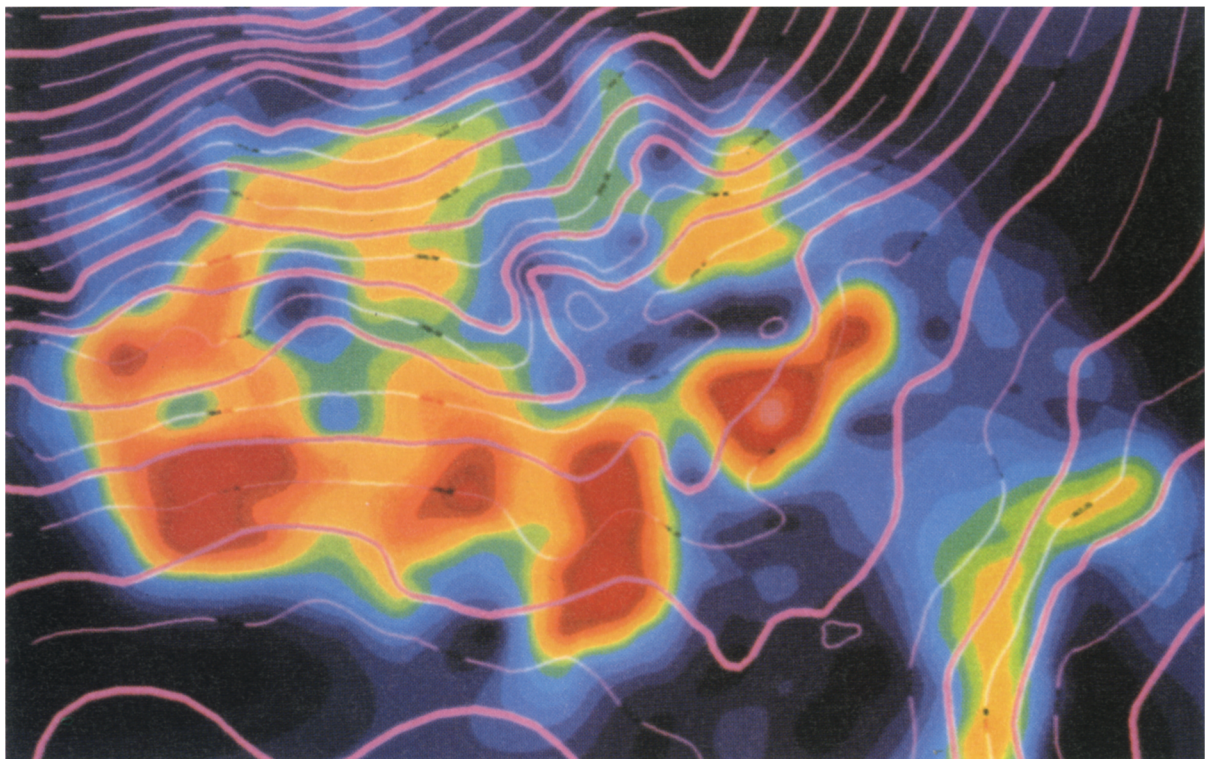


Plate 12 Horizon slice with overlain structural contours showing bright spots indicating stratigraphic hydrocarbon-gas accumulations, in a turbidite fan. (From Brown, 1991: 130.)

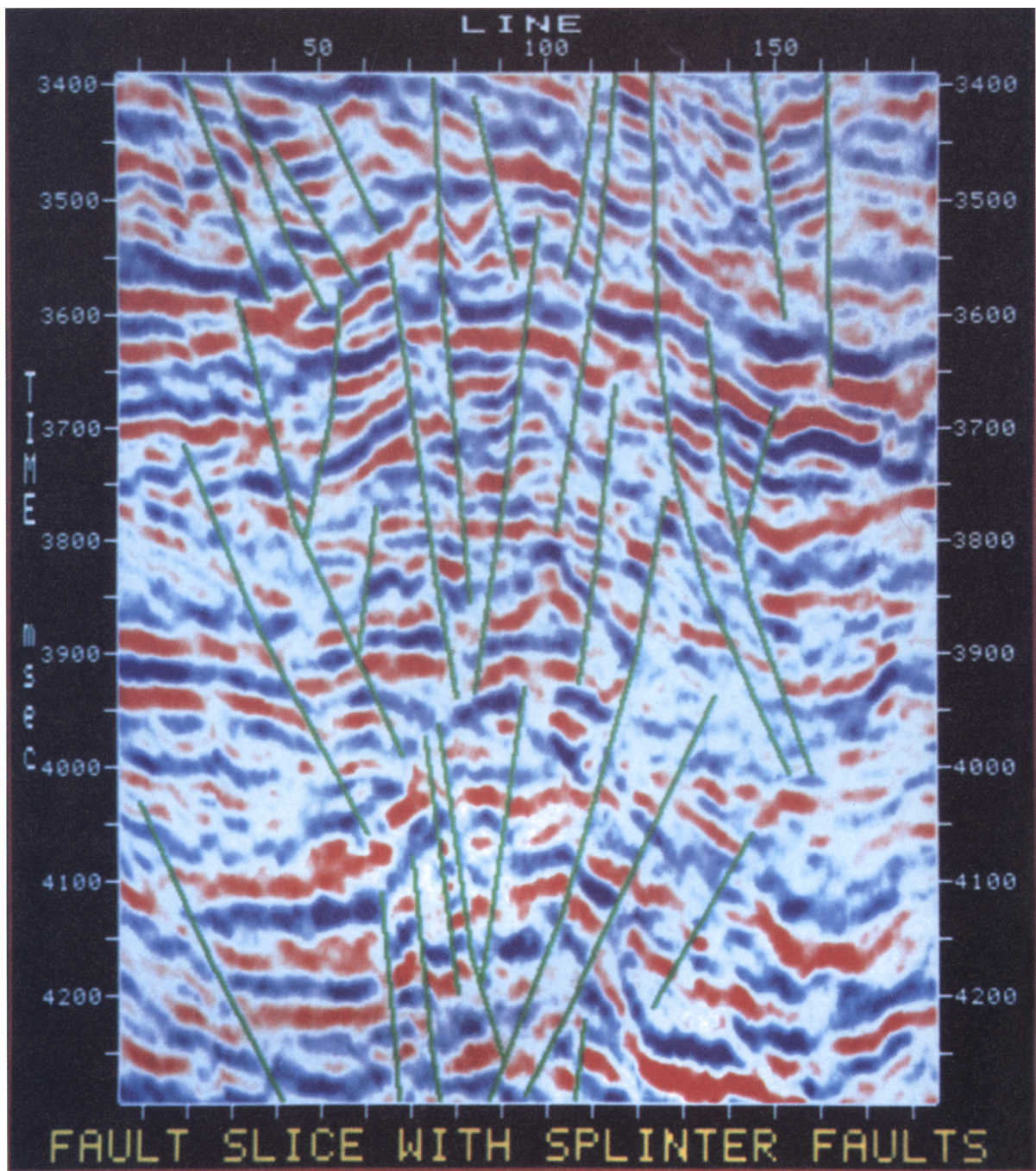


Plate 13 Fault slice showing structure adjacent to the fault plane and secondary splinter faults. (From Brown, Edwards, and Howard, 1987.)