

Fig. 4.2. Illustration of the five sea-level zones assuming instantaneous uniform melting of Northern Hemisphere ice at 16 ka. Sea-level curves are predicted to be similar within each zone. Yellow fill shows Zone 1. Red and blue filled circles show islands that according to Nunn (1994; Tables 8.5 and 8.6) experienced emergence and submergence, respectively during the middle (to late) Holocene. Black filled circles show location of the sea-level curves in Fig. 4.3. Reproduced from Fig. 5 of Clark et al. (1978) with permission of Academic Press.

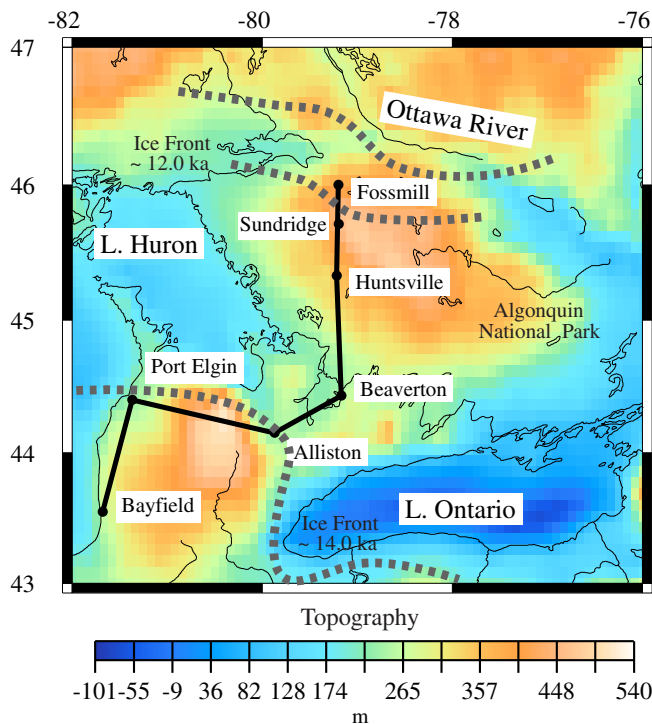


Fig. 4.7. Localities in central Canada where the uplift of the former shorelines of Lake Algonquin have been measured. The thick dashed lines show the approximate position of the Laurentide ice front at 14.0, 12.2 and 11.2 ka based on Fig. XII-16 of Prest (1970).