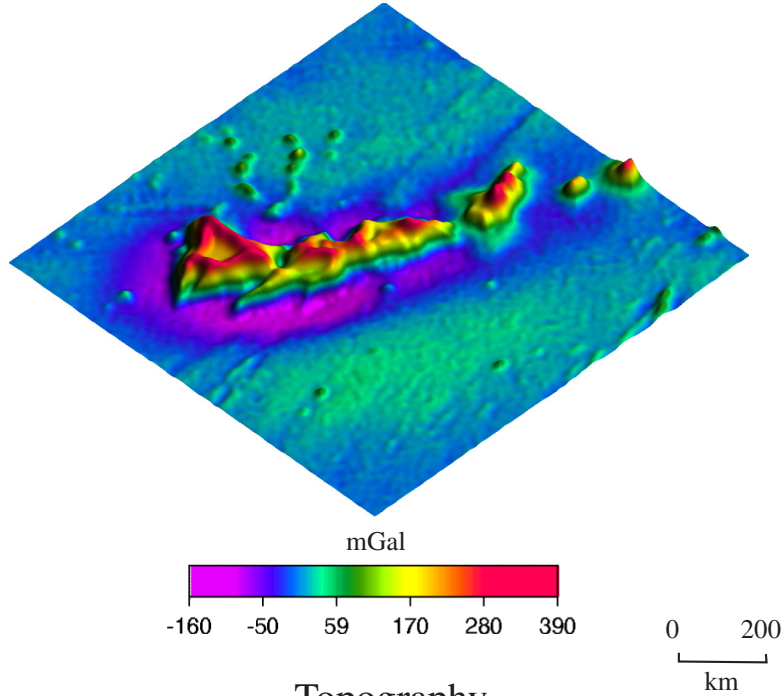


## Free-air gravity anomaly



## Topography

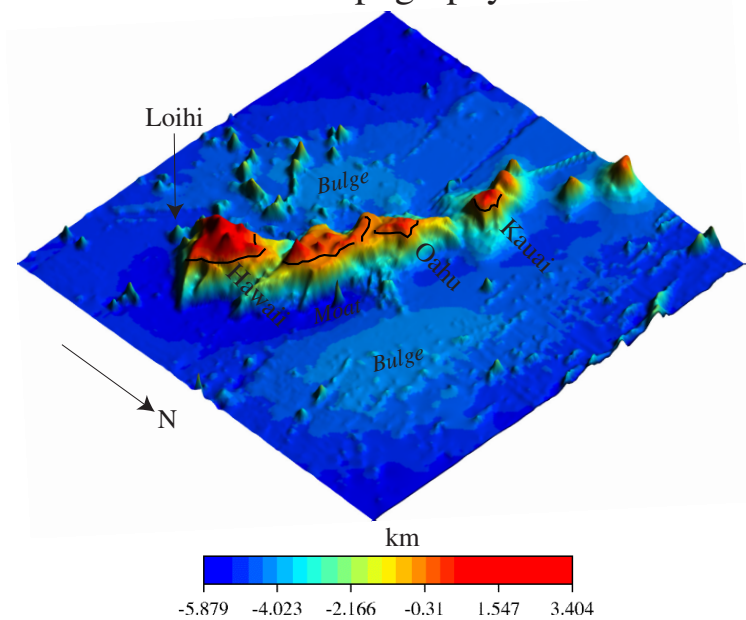


Fig. 4.14. Free-air gravity anomaly and topography in the region of the Hawaiian Islands. (a) free-air anomaly is based on the Sandwell and Smith (1997) altimeter-derived gravity field (offshore) and the compilations of Woollard et. al. (1966) (onshore). (b) bathymetry based on ship track data and topography based on the compilations of Woollard et al. (1966).