

Plate 5.1: Five input NAND with X-axis output

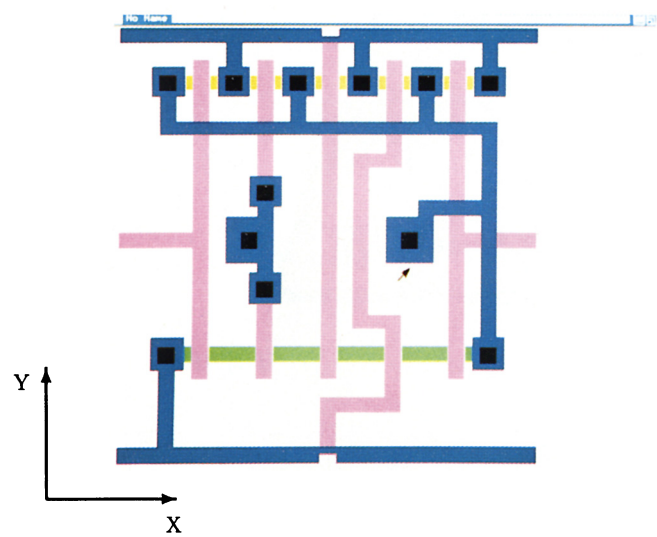


Plate 5.2: Five input NAND with Z-axis output

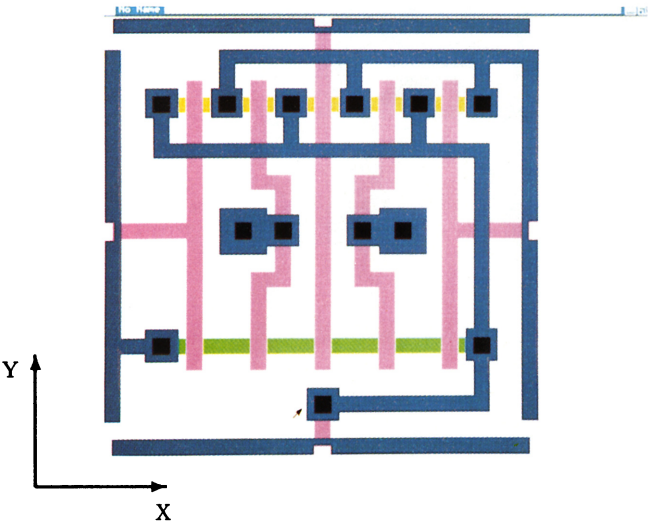


Plate 5.3: Five input NAND with Y-axis output

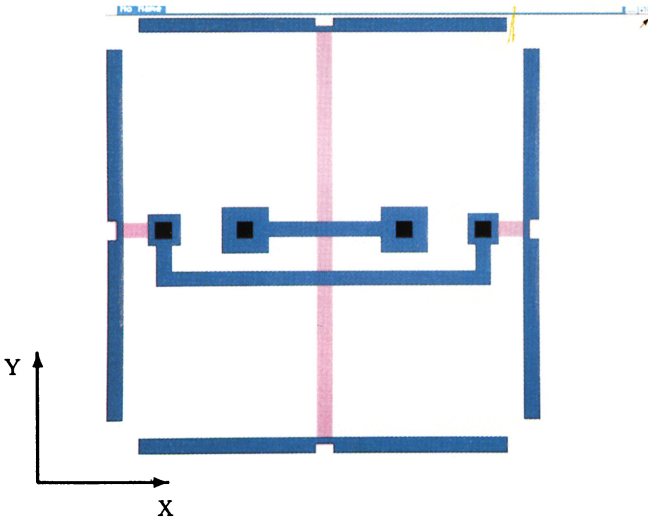


Plate 5.4: A six connection worst-case wiring cell

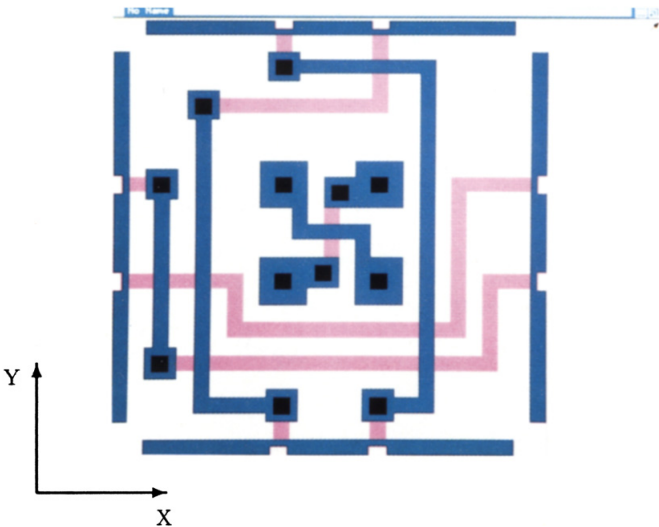


Plate 8.1: A twelve connection worst-case wiring cell

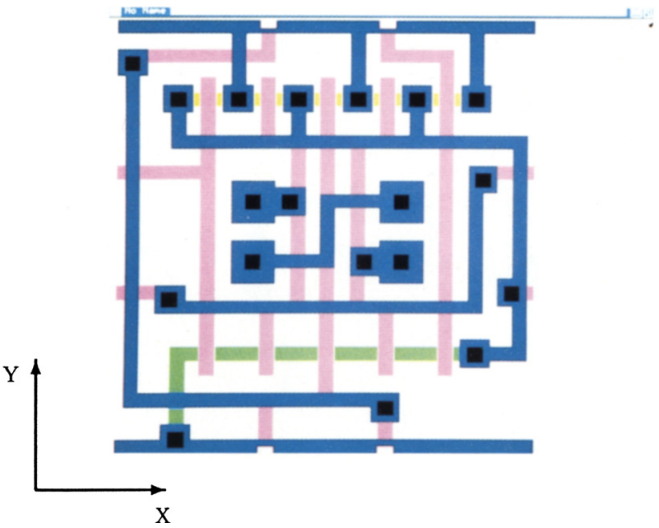


Plate 8.2: Five input NAND with two connections per face and crossed wiring

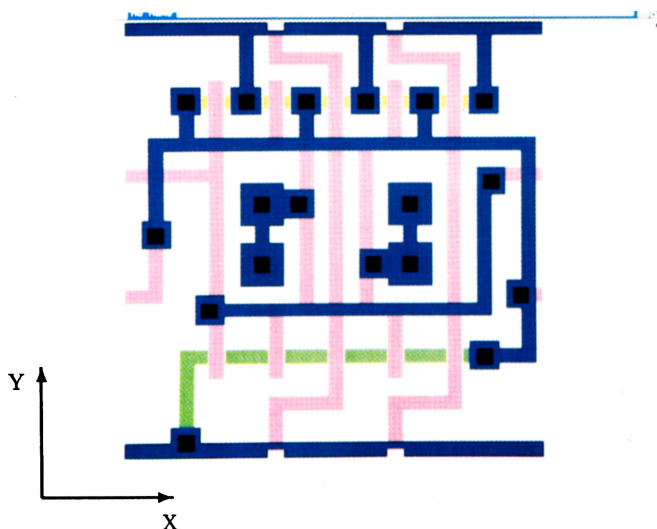


Plate 8.3: Five input NAND with two connections per face feeding through

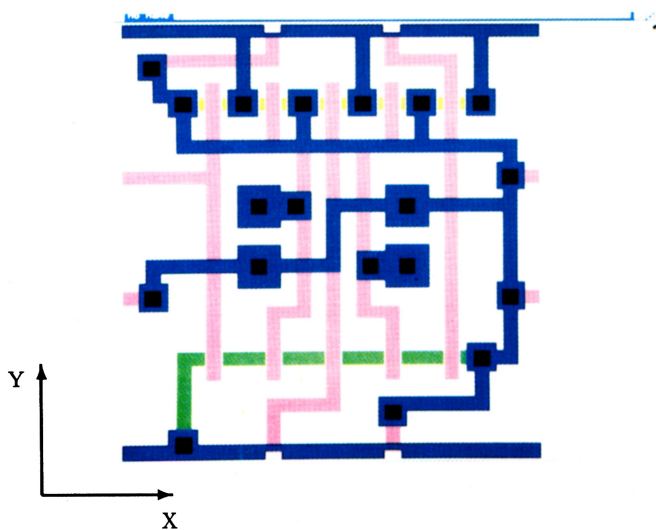


Plate 8.4: Five input NAND with two connections per face and multiple outputs