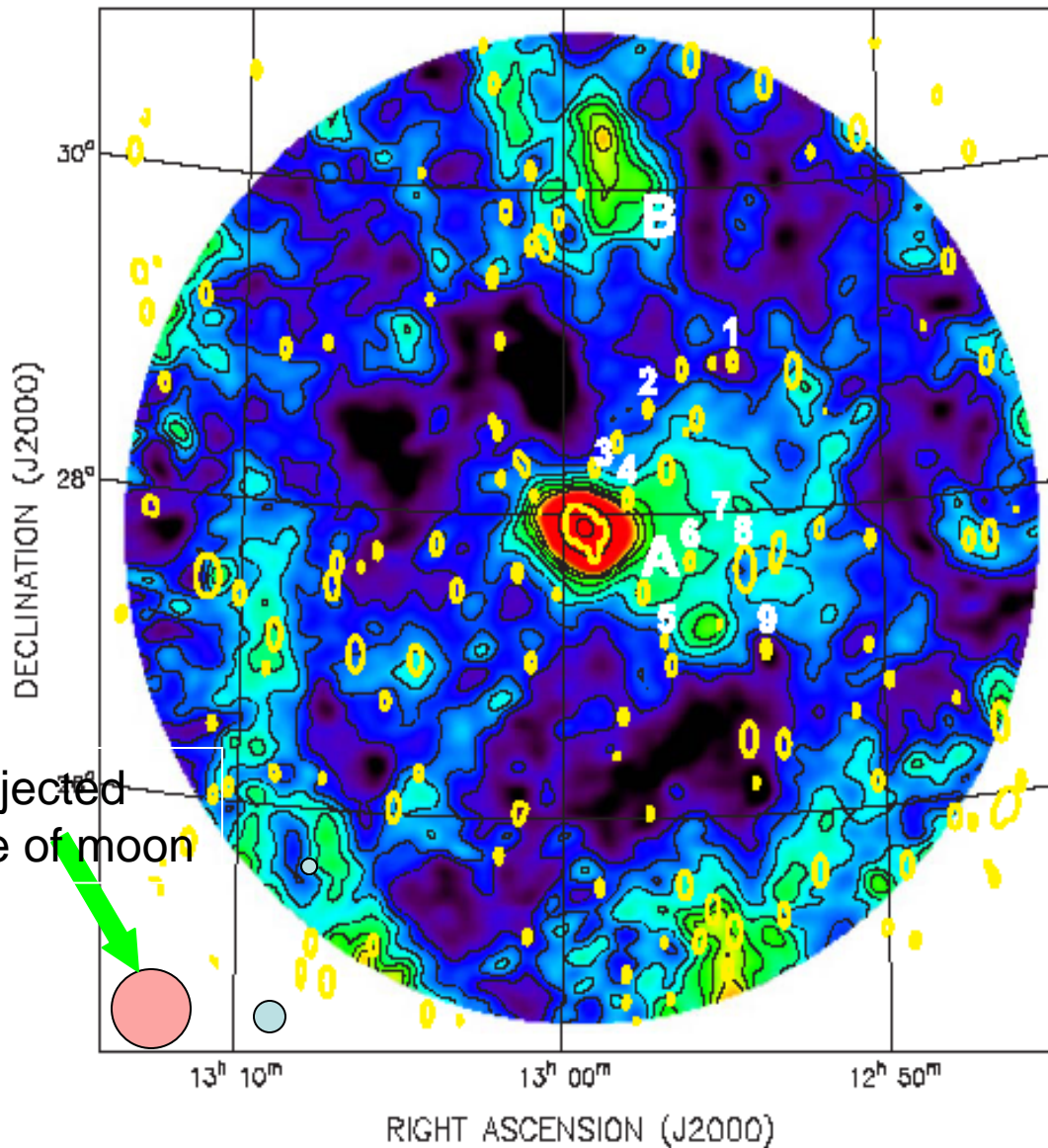


# COMBINED Arecibo-DRAO image, smoothed to $10'$ resolution (Arecibo)



- Discrete sources removed,
- CMB + smooth Milky Way foreground removed
- Strongest discrete sources re-overlaid (yellow ellipses)
- Black contours at 1.4, 1.9, 2.4, 2.9, 3.4, 3.9, 4.4, 10, 40K
- $1.4K \approx 5.6 \sigma$

***P. Kronberg, R. Kothes, C. Salter, & Perillat ApJ 659, 267, 2007***