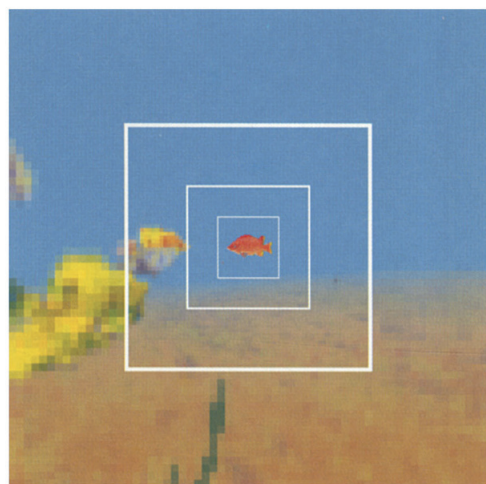


Left eye



Right eye

(b)

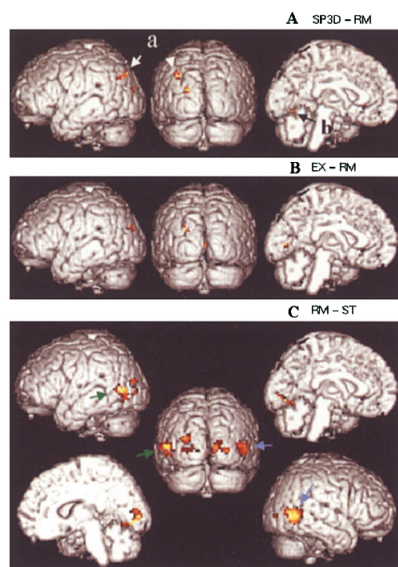


Figure 11.6 Results of the group analysis.

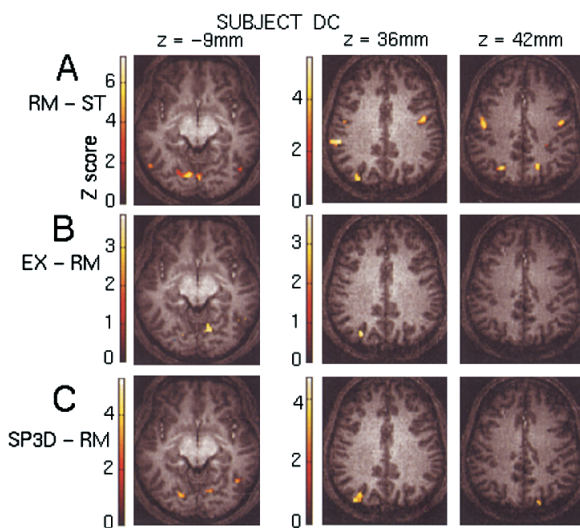


Figure 11.7 Localisation of the activity foci on individual data.

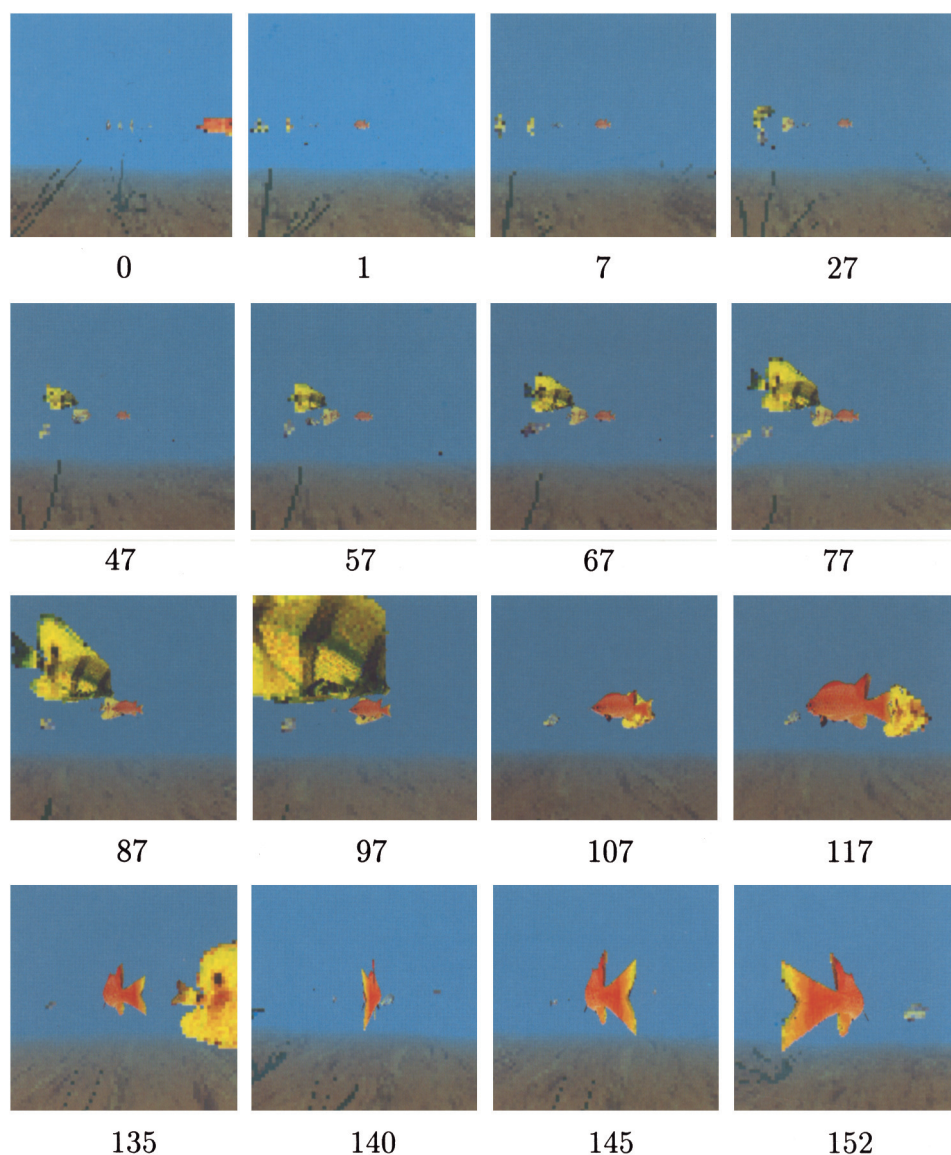


Figure 12.9 Retinal image sequence from the left eye of the active vision fish as it detects and foveates on a reddish fish target and swims in pursuit of the target (monochrome versions of original color images). The target appears in the periphery (middle right) in frame 0 and is foveated in frame 1. The target remains fixated in the center of the fovea as the fish uses the gaze direction to swim towards it (frames 7–117). The target fish turns and swims away with the observer fish in visually guided pursuit (frames 135–152).

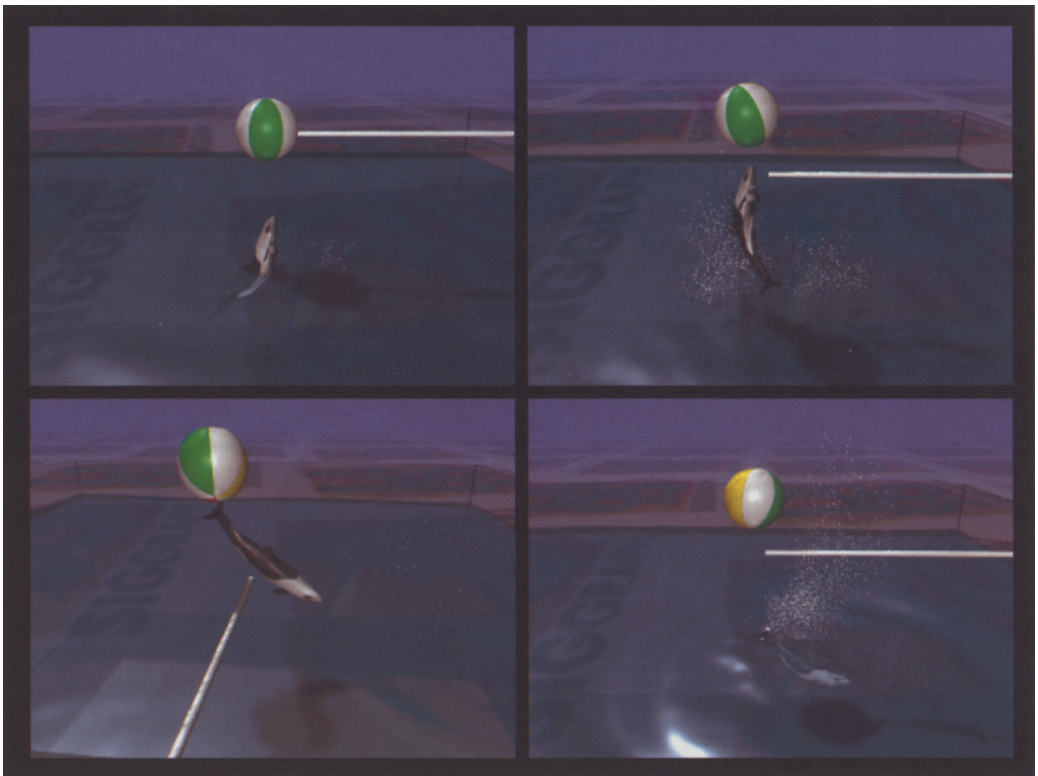


Figure 12.12 “SeaWorld” skills learned by an artificial dolphin.