

COLOR PLATES

1



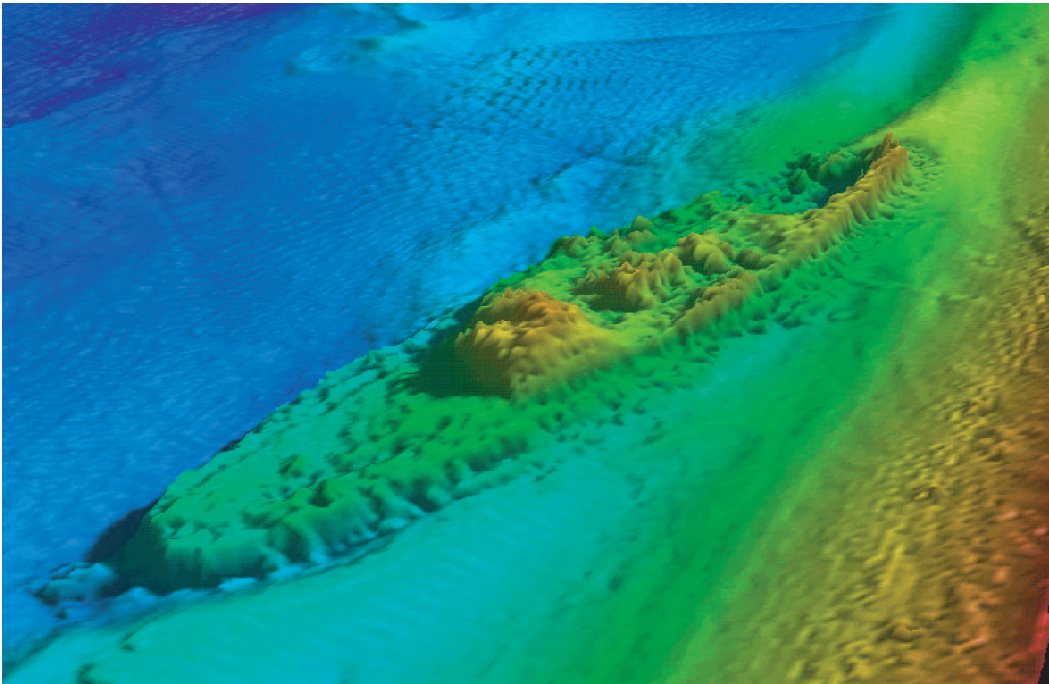
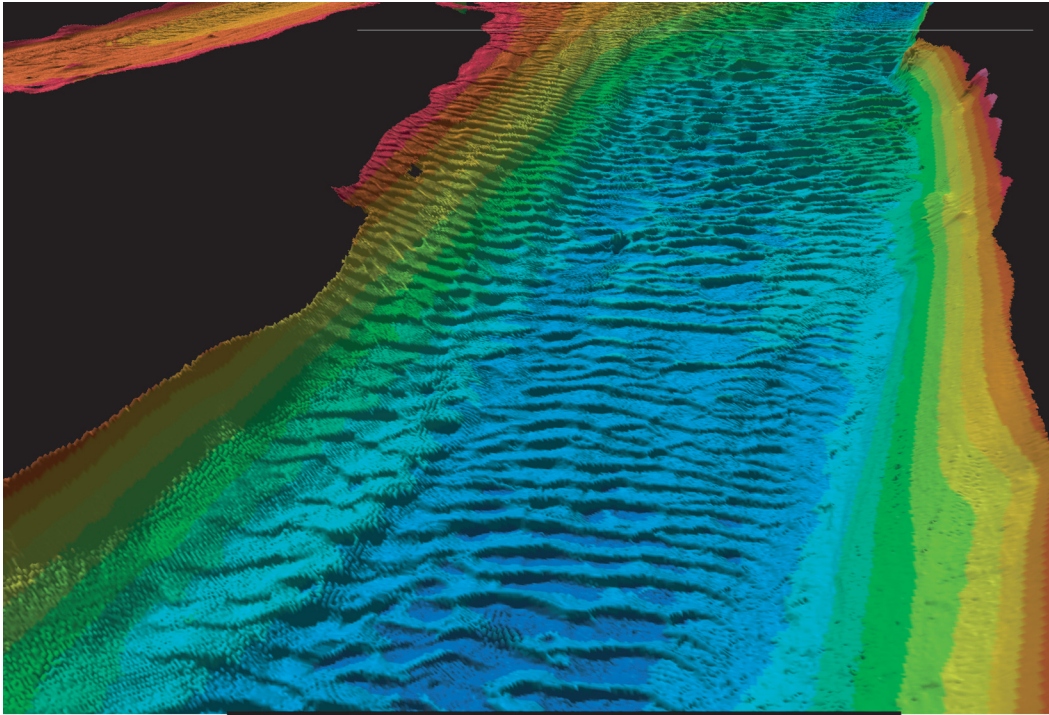
View of the Hudson River from Olana (former home of artist Frederick Church), south of Hudson, New York. Photo by Heather Malcom.



Pickerel weed in flower, South Cove, with West Point in background.

View of the Hudson River from Palisades near New York – New Jersey border. Photos by Jeffrey Levinton.





A great deal has been learned from a Hudson River survey using multi-beam scanning of the river bed (see Chapter 5). Top: a false-colored scan of the bottom showing large sand waves (scale at bottom in 300 m). Bottom: One of a number of wrecks discovered in the survey. Scans provided by Roger Flood.



COLOR PLATES

3



Moodna Creek Marsh, Orange County, New York. Photo by Stuart Findlay.



Constitution Marsh, showing patch of expanding *Phragmites australis* among larger stands of cattails. Photo by Jeffrey Levinton.

Air photo of Foundry Cove, Cold Spring, New York, during restoration in 1994. Marsh is dug out and new drainage established. Photo provided by Jim Rod.



Cattails, a dominant of  
freshwater tidal marshes.  
Photo by Jeffrey Levinton.



Muskrat lodge, Constitution  
Marsh. Photo by Eric Lind.



Left – Young-of-year menhaden (top) and gizzard shad. Right – White perch. Photos furnished by John Waldman.

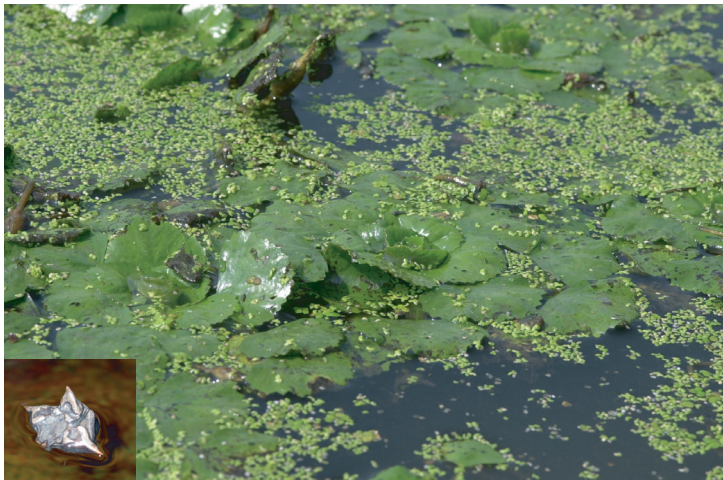


COLOR PLATES

5



Left – Marsh wren nest on cattails. Right – Sampling for benthic animals. Photos by Jeffrey Levinton.



Closeup of water chestnut, *Trapa natans*, bed; floating seed at lower left. Photos by Jeffrey Levinton.



Left: The zebra mussel, *Dreissena polymorpha*. Photo by Jeffrey Levinton. Right: Zebra mussels settled on a pipe, Foundry Cove. Photo by Jeffrey Levinton.





Left: A nesting female snapping turtle, *Chelydra serpentina* (shell length ca. 36 cm long). Right: Same turtle, about 200 feet above marsh in rear, from which she climbed up a steep slope to get to this nesting site. Photos by Jeffrey Levinton.



Returning a shortnose sturgeon, *Acipenser brevirostrum*, to the river. Photo by Kristin Marcell.



COLOR PLATES

7



A shad bake, organized by Hudson River Foundation educator Christopher Letts. Photo by John Waldman.



Seining for fish in the shallows of Tivoli South Bay next to a water chestnut bed. Jeremy Frenzel (right) takes a sample with his father while working as a Polgar Fellow in the Hudson River Estuarine Sanctuary. Photo by Karin Limburg. Sadly, Jeremy died in 2005.



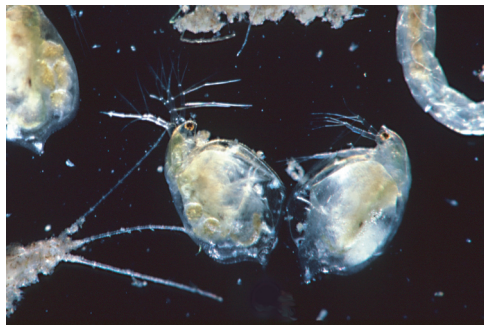
The blue claw crab, *Callinectes sapidus*. Photo by Gregg Kenney.



Chironomid larva. Photo by Eric Lind.



Damselfly larva. Photo by Eric Lind.



*Daphnia* sp. Photo by Eric Lind.



Gammarid amphipods. Photo by Eric Lind.



Bivalve, *Rangia cuneata*. Photo by Jeffrey Levinton.



Hydra budding. Photo by Eric Lind.