

SECTION FROM THE LAND'S END TO THE GERMAN OCEAN.

Scale - of Length 10 Geographic Miles to an Inch - of Height 400 feet to one eighth of an Inch.

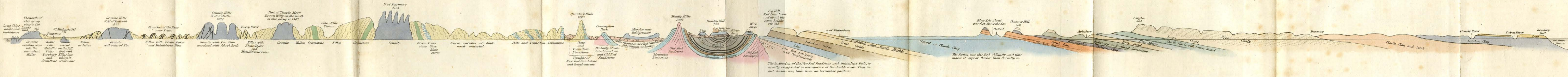


Fig. 1.

SECTION FROM THE IRISH SEA IN CUMBERLAND TO THE CHANNEL IN SUSSEX.

Scale as above

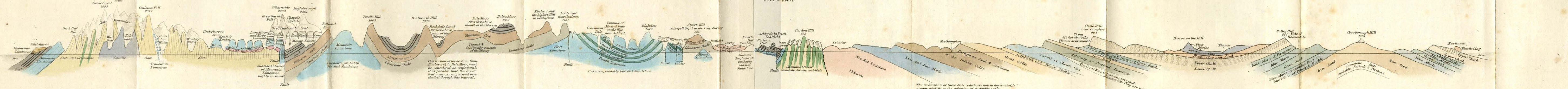
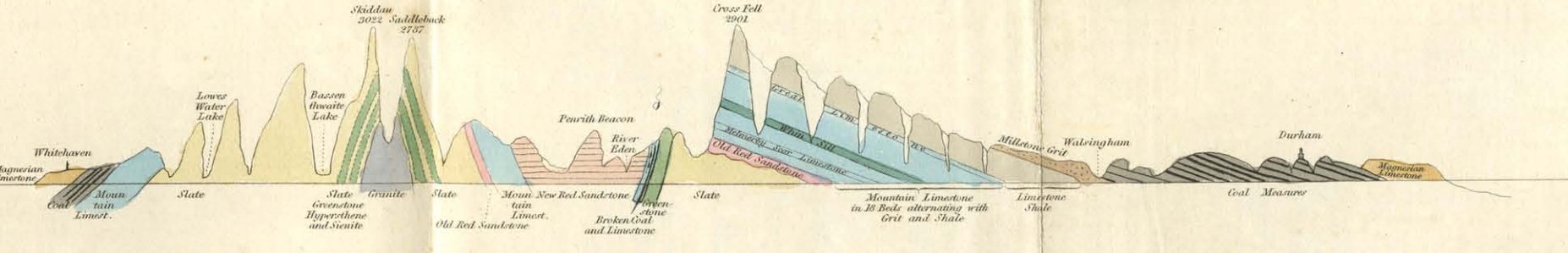


Fig. 2.

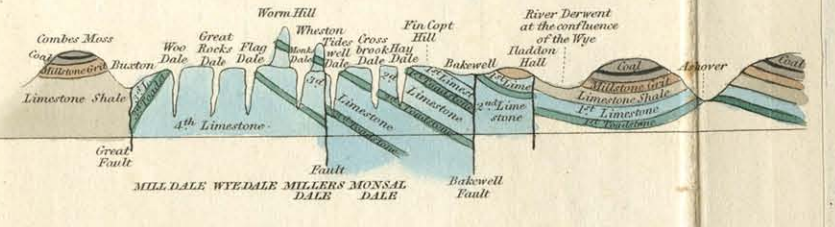
SECTION FROM THE IRISH SEA IN CUMBERLAND TO THE NORTH SEA IN DURHAM.

Fig. 3.



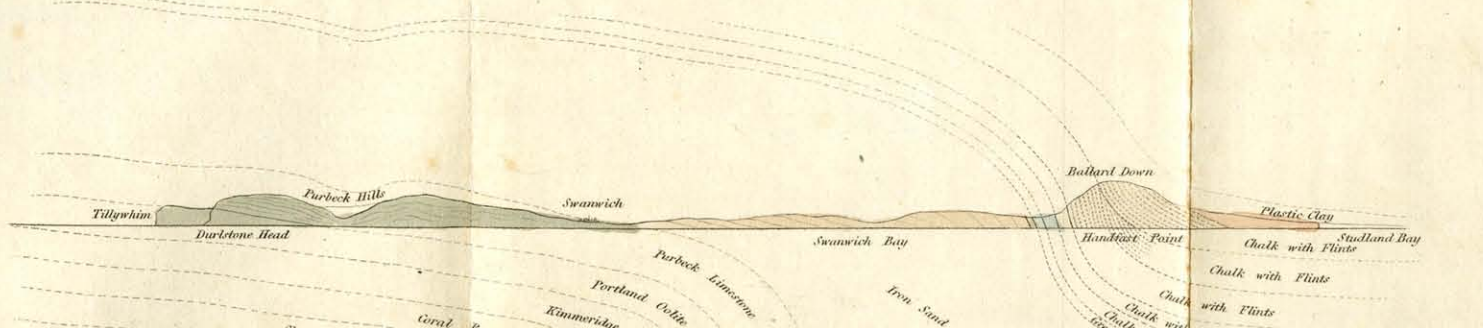
SECTION along the Valley of the Wye in DERBYSHIRE (the different names given to the different portions of which, are expressed in Capital Letters below/ exhibiting the openings of the lateral Dales into it on the north, and extending beyond the Course of the Wye on either side, and in the same general direction.

Fig. 4.



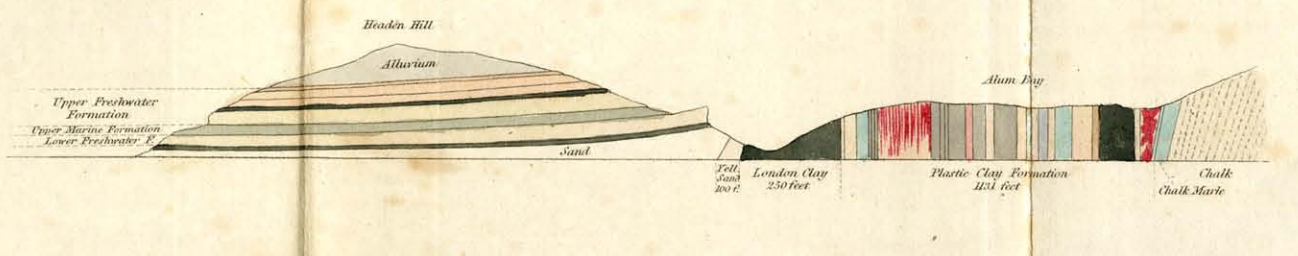
N & S. SECTION THROUGH THE ISLE OF PURBECK &c.

Fig. 5.



NORTH WEST COAST OF THE ISLE OF WIGHT.

Fig. 6.



Figures 1, 2, 3, & 4 are from Drawings by the Rev. W. D. Conybeare. 5 is from Sir H. Englefield, Bart. of the I. of Wight, with additions by the Rev. W. D. Conybeare. 6 is from the Trans. of the Geological Society, Vol. II.