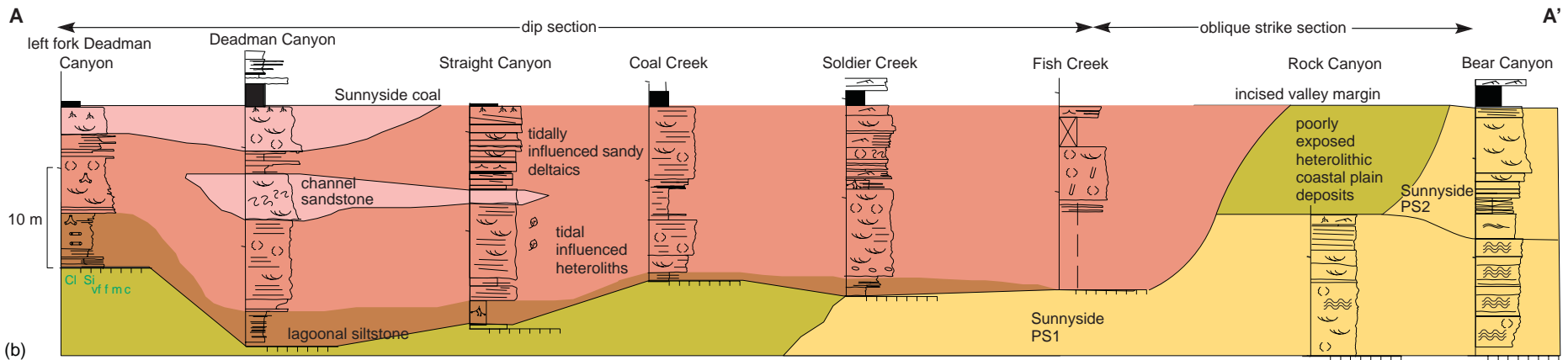


(a) © The Open University

KEY

- planar lamination
- trough cross-stratification
- hummocky cross-stratification
- upper shoreface bioturbation
- lower shoreface/offshore bioturbation
- ripple cross-stratification
- wave ripples
- Glossifungites* surface
- lag
- Skolithos*
- Ophiomorpha*
- coal
- shoreface and foreshore facies
- undifferentiated coastal plain
- fluvial/undifferentiated incised valley fill deposits
- tidal-incised valley fill deposits
- lagoonal siltstone
- shell bed



(b)



(c)



(d)



(e)



(f)